

Respect Inspire Achieve



Rishton Methodist Primary School
George Street, Rishton, Blackburn, BB1 4JF
Tel: 01254 887223
www.rishton.lancsngfl.ac.uk
Headteacher: Mrs J. Neale



Well to say it has only been a 4 day week, it has been incredibly busy in school. To celebrate the life, achievements and service of Her Late Majesty Queen Elizabeth, all the children spent a whole day finding out about her reign and every child has produced work about this which is now displayed in the corridor as you come through the front door. If you come into school, please take the time to have a look, it is amazing!

Earlier this morning, the school photographer came in to take individual and sibling photographs of the children. They looked lovely and it was an interesting morning for me to see how the photographer got some of the more reluctant children to smile—I am sure you will be pleased when you see them.



Next Monday is European Day of Languages and each class will study the language, culture and Geography of a different country. These are the countries each class has chosen:

FS— France

Year 1—Italy

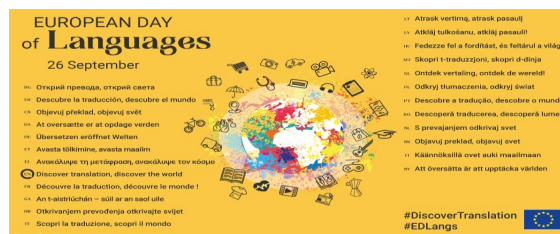
Year 2— Slovakia

Year 3—Romania

Year 4— Norway

Year 5—Sweden

Year 6—Czech Republic If you have any pictures or other artefacts that your child could bring in for their class to look at about their country, I am sure the teachers will be very grateful.



Finally, I am sad that once again I have to report vandalism on school premises out of school hours. This time we have had young people climbing over the roof into an area used by our Foundation Stage children and smashing up equipment. This area can only be accessed by climbing over the roof and it is obvious that this is a deliberate act. Please if you or your child knows who may be responsible, let me know so that I can take action and involve the Police.

Take care and keep safe.

Thank you for your continued support.

Mrs Neale

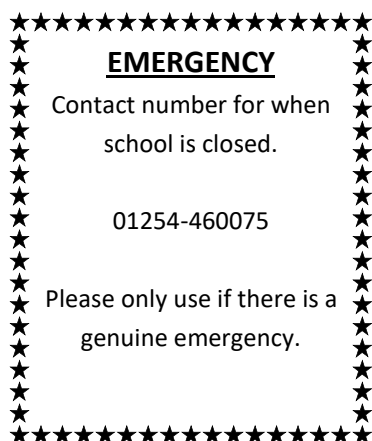


Don't forget to return your
Child's Data Collection Sheet
and Flu Nasal Spray Consent
form to the school office
ASAP.



Please do not bring any dogs onto the
school premises even if you are carry-
ing them. If you bring your dog to
school, you will need to wait outside
the gates.

Thank you.



Our Stars of the Week



Sapphire

Emerald

Ruby

Amethyst

Topaz

Opal

Diamond

Well done to all our stars

**Attendance winners this
week.**

*Topaz
(Year 4)*



**Team Point winners last
week.**



Well done team members

Diary Dates

- ♦ Monday 26th September—European Day of Languages
- ♦ Wednesday 5th October—World Teacher Day
- ♦ Monday 10th October—National Braille Week
- ♦ Tuesday 11th October—Harvest Service in church at 2.15pm (everyone welcome)
- ♦ Thursday 20th October—Parent's Evening 4pm—7pm (details to follow)
- ♦ Friday 21st October—finish for half term at 3.15pm
- ♦ 31st October and 1st November—INSET Days for staff
- ♦ Wednesday 2nd November—school reopens for children
- ♦ Friday 4th November—Bonfire Night Disco 6pm—7.30pm (details to follow)
- ♦ Monday 14th November—Anti-bullying week
- ♦ Friday 18th November—Children in Need Day
- ♦ Monday 21st November—Multi-cultural week
- ♦ w/c Monday 28th November—Christmas performances (details to follow)
- ♦ Tuesday 6th December—Christingle service in church at 2.15pm (everyone welcome)
- ♦ Friday 9th December—Christmas Jumper Day
- ♦ Thursday 15th December—Christmas service in church at 2.15pm (everyone welcome)
- ♦ Friday 16th December— finish for Christmas at **2pm (After School Club 5pm)**



PLEASE RESPECT OUR NEIGHBOURS WHO LIVE ON GEORGE STREET.



PLEASE PARK AWAY FROM THE SCHOOL WHEN DROPPING OFF AND COLLECTING YOUR CHILD. THIS IS ESPECIALLY IMPORTANT FOR OUT OF SCHOOL EVENTS SUCH AS DISCOS AND SCHOOL PERFORMANCES.

CONSIDER HOW YOU WOULD FEEL IF YOU COULDN'T PARK OUTSIDE YOUR OWN HOUSE!

